



Morecambe Offshore Windfarm: Generation Assets Development Consent Order Documents

Volume 4 Safety Zone Statement

PINS Document Reference: 4.5

APFP Regulation: 6(b)(ii)

Rev 01



Document History

| | | | |
|------------------------|-----------------------------|-----------------|----------|
| Doc No | MOR001-FLO-CON-ENV-RPT-0004 | Rev | 01 |
| Alt Doc No | PC1165-RHD-DC-XX-RP-Z-0012 | | |
| Document Status | Approved for Use | Doc Date | May 2024 |
| PINS Doc Ref | 4.5 | APFP Ref | 6(b)(ii) |

| Rev | Date | Doc Status | Originator | Reviewer | Approver | Modifications |
|------------|-------------|-------------------|--------------------|---------------------------------|---------------------------------|----------------------|
| 01 | May 2024 | Approved for Use | Royal HaskoningDHV | Morecambe Offshore Windfarm Ltd | Morecambe Offshore Windfarm Ltd | n/a |

Contents

| | | |
|-----|---|----|
| 1 | Introduction | 9 |
| 1.1 | Legislative context..... | 9 |
| 1.2 | Purpose of the document | 9 |
| 1.3 | Brief Project description and description of Project area | 9 |
| 2 | Scope of the Projects Application..... | 12 |
| 3 | Safety Zone Statement..... | 12 |
| 4 | References..... | 14 |

Figures

Figure 1.1 Morecambe Offshore Windfarm Site 11

Tables

Table 3.1 Safety Zones that may be applied for 13

Glossary of Acronyms

| | |
|--------|---|
| AfL | Agreement for Lease |
| APFP | Applications: Prescribed Forms and Procedures |
| DCO | Development Consent Order |
| DESNZ | Department for Energy Security and Net Zero |
| MHWS | Mean High Water Springs |
| NSIP | Nationally Significant Infrastructure Project |
| OREI | Offshore Renewable Energy Installations |
| OSP(s) | Offshore substation platform(s) |
| PINS | Planning Inspectorate |
| SoS | Secretary of State |
| TCE | The Crown Estate |
| WTG(s) | Wind turbine generator(s) |

Glossary of Unit Terms

| | |
|-----------------|-------------------|
| km | kilometre |
| km ² | kilometre squared |
| m | metre |
| MW | Megawatt |

Glossary of Terminology

| | |
|---|--|
| Applicant | Morecambe Offshore Windfarm Ltd |
| Application | This refers to the Applicant's application for a Development Consent Order (DCO). An application consists of a series of documents and plans which are published on the Planning Inspectorate's (PINS) website. |
| Agreement for Lease (AfL) | Agreements under which seabed rights are awarded following the completion of The Crown Estate tender process. |
| Generation Assets (the Project) | Generation assets associated with the Morecambe Offshore Windfarm. This is infrastructure in connection with electricity production, namely the fixed foundation wind turbine generators (WTGs), inter-array cables, offshore substation platform(s) (OSP(s)) and possible platform link cables to connect OSP(s). |
| Inter-array cables | Cables which link the WTGs to each other and the OSP(s). |
| Landfall | Where the offshore export cables would come ashore. |
| Morgan and Morecambe Offshore Wind Farms: Transmission Assets | The transmission assets for the Morgan Offshore Wind Project and the Morecambe Offshore Windfarm. This includes the OSP(s) ¹ , interconnector cables, Morgan offshore booster station, offshore export cables, landfall site, onshore export cables, onshore substations, 400kV cables and associated grid connection infrastructure such as circuit breaker infrastructure. Also referred to in this chapter as the Transmission Assets, for ease of reading. |
| Offshore substation platform(s) | A fixed structure located within the windfarm site, containing electrical equipment to aggregate the power from the WTGs and convert it into a more suitable form for export to shore. |
| Platform link cable | An electrical cable which links one or more OSP(s). |
| Safety Zones | An area around a structure or vessel which should be avoided, as set out in Section 95 of the Energy Act 2004 and the Electricity (Offshore Generating Stations) (Safety Zones) (Application Procedures and Control of Access) Regulations 2007. |
| Scour protection | Protective materials to avoid sediment being eroded away from the base of the foundations due to the flow of water. |
| Wind turbine generator (WTG) | A fixed structure located within the windfarm site that converts the kinetic energy of wind into electrical energy. |
| Windfarm site | The area within which the WTGs, inter-array cables, OSP(s) and platform link cables will be present. |

¹ At the time of writing the Environmental Statement (ES), a decision had been taken that the offshore substation platforms (OSP(s)) would remain solely within the Generation Assets application and would not be included within the Development Consent Order (DCO) application for the Transmission Assets. This decision post-dated the Preliminary Environmental Information Report (PEIR) that was prepared for the Transmission Assets. The OSP(s) are still included in the description of the Transmission Assets for the purposes of this ES as the Cumulative Effects Assessment (CEA) carried out in respect of the Generation/Transmission Assets is based on the information available from the Transmission Assets PEIR



The future of renewable energy

A leading developer in Offshore Wind Projects

1 Introduction

1. This Safety Zone Statement forms part of a set of documents that supports the Development Consent Order (DCO) application submitted by Morecambe Offshore Windfarm Ltd (the Applicant) for the Morecambe Offshore Windfarm Generation Assets (the Project).

1.1 Legislative context

2. This Safety Zone Statement has been prepared in accordance with Regulation 6(1)(b)(ii) of the Infrastructure Planning (Applications: Prescribed Forms and Procedures) Regulations 2009 (the 'APFP Regulations'), which requires the applicant for a DCO, for the construction of offshore generating stations, to provide a Statement as to whether an application will be made for Safety Zones. This Statement outlines the legislative requirements relating to an application for Safety Zones for Offshore Renewable Energy Installations (OREI), under Section 95 of the Energy Act 2004 (the '2004 Act'), the Applicant's approach and the scope of the works for which the DCO is being sought.

1.2 Purpose of the document

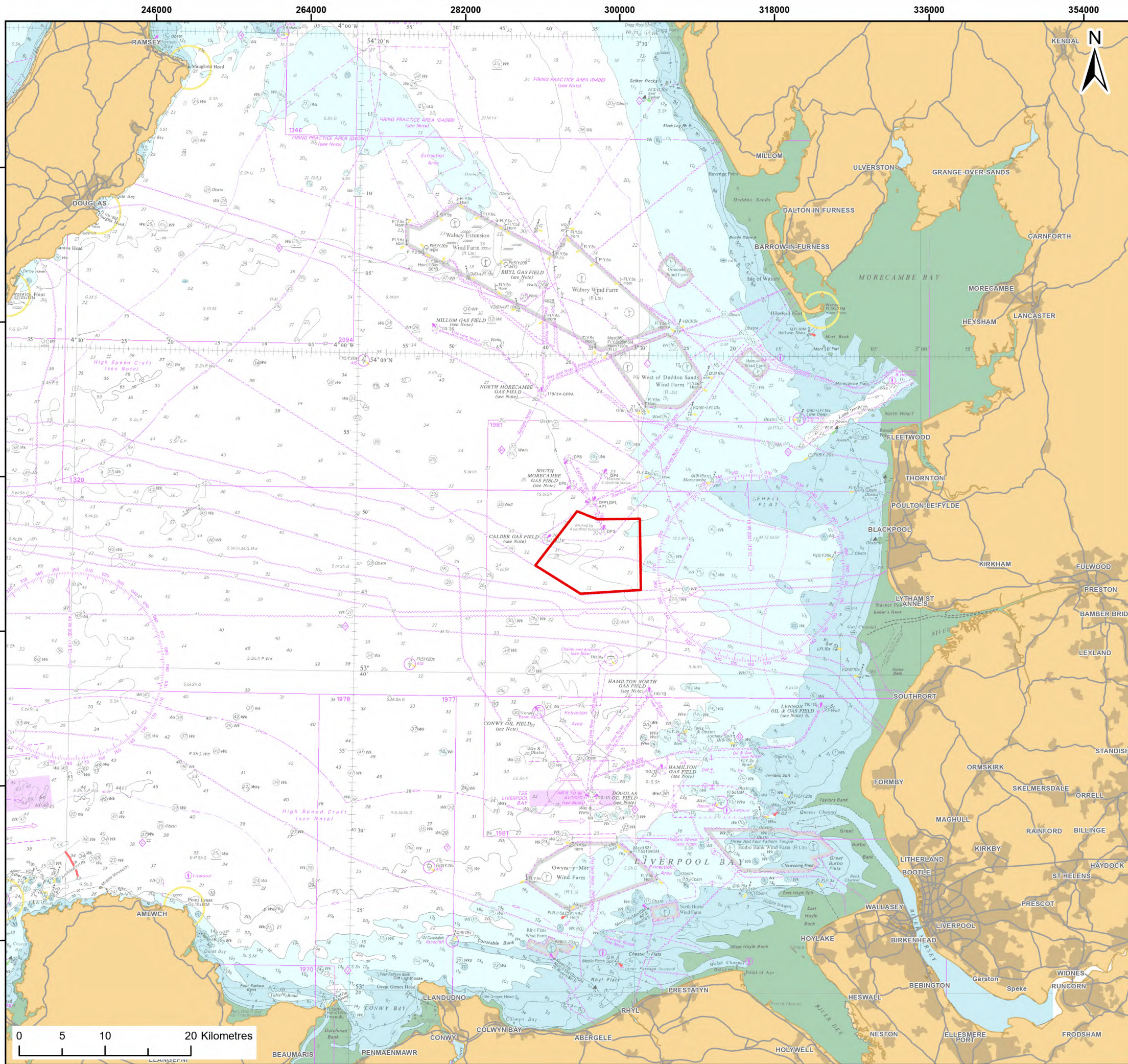
3. The Safety Zone application would provide all of the information required by paragraph 3 of Schedule 16 to the 2004 Act and Regulation 3 of the Electricity (Offshore Generating Stations) (Safety Zones) (Application Procedures and Control of Access) Regulations 2007 (the '2007 Regulations'). In accordance with Section 95 of the 2004 Act, the application would be made to the Secretary of State for the Department for Energy Security and Net Zero ('DESNZ').
4. The Safety Zone application would be made once the final number and precise location for the OREI have been determined, including the wind turbine generators (WTGs) and offshore substation platform(s) (OSP(s)).

1.3 Brief Project description and description of Project area

5. The Project relates only to the Generation Assets of the Morecambe Offshore Windfarm (including WTGs, inter-array cables, OSP(s), and possible platform link cables to connect OSP(s)). A separate DCO for the transmission assets associated with the Morecambe Offshore Windfarm and the Morgan Offshore Wind Project (another proposed windfarm to be located in the Irish Sea) would be sought separately.
6. The Project would consist of between 30 'larger' or 35 'smaller' WTGs, with a capacity of greater than 100MW and therefore is categorised as being a Nationally Significant Infrastructure Project (NSIP), as defined by Section

15(3) of the Planning Act 2008, as amended. As such, there is a requirement to submit an application for a DCO to the Planning Inspectorate (PINS), to be determined by Secretary of State for DESNZ.

7. The closest point to the Lancashire coast is approximately 30km, when measured from Mean High Water Springs (MHWS) (**Figure 1.1**). The Project windfarm site covers 87km².
8. The DCO boundary includes the windfarm site as defined by The Crown Estate (TCE) AfL areas.
9. The key offshore components comprise:
 - WTGs
 - OSP(s)
 - Foundation structures for WTGs and OSP(s)
 - Inter-array cables
 - Platform link cables



Legend:
 Morecambe Offshore Windfarm Site

© Haskoning DHV UK Ltd, 2024; Contains OS data © Crown copyright and database right, 2024; © British Crown and OceanWise, 2024. All rights reserved. License No. EMS-EK001-FN800-004780. Not to be used for Navigation. Map data © OpenStreetMap contributors, Microsoft, Facebook, Inc. and its affiliates, Esri Community Maps contributors, Map layer by Esri

Report:
 Morecambe Offshore Windfarm: Generation Assets Safety Zone Statement

Title:
 Morecambe Offshore Windfarm Site

Figure: 1.1 Drawing No: PC1165-RHD-ES-OF-DG-Z-0155

| Revision: | Date: | Drawn: | Checked: | Size: | Scale: |
|-----------|------------|--------|----------|-------|-----------|
| P01 | 14/05/2024 | SB | GLD | A3 | 1:450,000 |
| P02 | 21/05/2024 | SB | GLD | A3 | 1:450,000 |

Co-ordinate system: WGS 1984 UTM Zone 30N



2 Scope of the Projects Application

10. The DCO seeks, among other things, consent for offshore works including installation of WTGs/OSP(s), inter-array and platform link cables. These are outlined in detail in the draft DCO (Document Reference 3.1).

3 Safety Zone Statement

11. The Applicant intends to make an application for Safety Zones around the OREI in the event that consent is granted for the Project, in order to ensure the safety of the windfarm infrastructure, individuals working thereon, construction vessels, other vessels navigating in the area whilst works take place, as well as the protection of assets and property.
12. The need for Safety Zones at the Project is set out in **Chapter 14 Shipping and Navigation** (Document Reference 5.1.14) and in **Appendix 14.1 Navigation Risk Assessment** (Document Reference 5.2.14.1).
13. For the construction phase, 500m Safety Zones around the construction site where vessels are engaged in construction activities are considered necessary. Additionally, a 50m Safety Zone may also be necessary around OREI where there are some residual works ongoing, such as cable termination and testing works prior to commissioning.
14. The Applicant does not currently foresee any specific need for Safety Zones to be established around the OREI during the operational phase, with the exception of during major maintenance activities. During major maintenance activities, it is anticipated that a 500m Safety Zone would be necessary. “Major maintenance works” have been defined by Regulation 2 of the 2007 Regulations as works relating to any renewable energy installation which has become operational, requiring the attachment to, or anchoring next to, such an installation of a self-elevating platform, jack-up barge, crane barge or other maintenance vessel.
15. It is not anticipated that an application for Safety Zones would include any specific provisions for the decommissioning of the Project. The need for Safety Zones at that stage would be subject to appropriate risk assessment and consultation with the statutory authorities at that time. A further Safety Zone application would be submitted for the decommissioning works, if required, at the relevant time.
16. The Safety Zones that may be applied for are summarised in **Table 3.1**.

Table 3.1 Safety Zones that may be applied for

| Potential Safety Zone | Details |
|-----------------------------|--|
| Construction | Up to 500m around each WTG or OSP foundation whilst vessels are engaging in construction activities. |
| Construction /commissioning | Up to 50m around each WTG or OSP foundation where major construction has finished, but where some work may be ongoing e.g. cable termination and testing prior to WTG commissioning. |
| Major maintenance | Up to 500m when major maintenance is in progress (use of jack-up vessel or similar). |
| Decommissioning | Up to 500m at the end of the working life of a WTG or OSP foundation when it is being decommissioned. |

4 References

Electricity Regulations (2007). *The Electricity (Offshore Generating Stations) (Safety Zones) (Application Procedures and Control of Access) Regulations 2007*.

Legislation.gov.uk. Available at:

<https://www.legislation.gov.uk/ukxi/2007/1948/contents/made>. (Accessed January 2024)

HM Government (2008). The Planning Act (United Kingdom) (SI2008/29). [Online]

Available at <https://www.legislation.gov.uk/ukpga/2008/29/contents> (Accessed September 2023).

Offshore Renewable Energy Installations (OREI) (2017). *Energy Act 2004*.

Legislation.gov.uk. Available at:

<https://www.legislation.gov.uk/ukpga/2004/20/section/95#:~:text=95%20Safety%20zones%20around%20renewable%20energy%20installations%20%281%29> (Accessed March 2024).

The Infrastructure Planning (2009). *The Infrastructure Planning (Applications: Prescribed Forms and Procedure) Regulations 2009*.

Legislation.gov.uk. Available at: <https://www.legislation.gov.uk/ukxi/2009/2264/contents/made>. (Accessed December 2023)